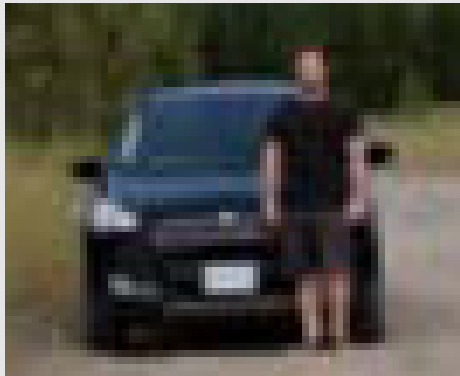


DORI Levels

Detail Simulations

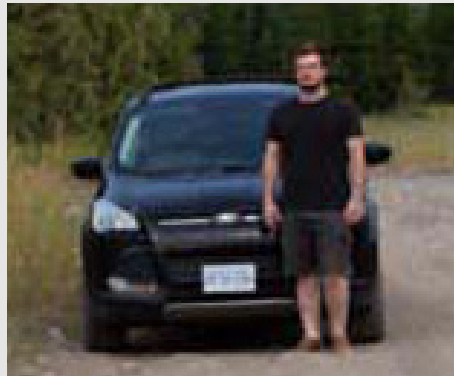


The DORI standard (based on the IEC EN62676-4: 2015 International Standard) defines different levels of detail for Detection (25PPM), Observation (62PPM), Recognition (125PPM), and Identification (250PPM). By using these PPM values, it is possible to select a specific camera sensor/lens combination and verify that it will provide the performance needed in each application.



Detection
25ppm

At the detection distance, an operator will be able to determine a human presence, although few details about that human will be visible.



Observation
62ppm

At the observation distance, some characteristic details of the individual, such as distinctive clothing, can start to be seen.



Recognition
125ppm

At this distance, verify with a high degree of certainty whether an individual shown is the same as someone you know. License plates also become legible at this distance under good conditions.



Identification
250ppm

The ability to positively identify a person beyond reasonable doubt. This level of detail provides sufficient image quality to identify an individual or clearly read a license plate.

The examples here simulate the amount of detail if you were to digitally zoom into the image. **Please note that these image simulations assume optimum imaging conditions, however many factors such as atmospheric conditions, heat waves, available light, subject motion or camera shake can degrade image clarity, and most of these issues are amplified at longer distances.**