

# VIS/NIR Zoom Cameras Brochure

Infiniti's Visible/Near-Infrared Camera Options



## TECHNOLOGY

# VIS/NIR Sensors & Fog Filter

Infiniti's VIS/NIR zoom cameras utilize high-end CMOS sensors to offer excellent spectral sensitivity in the visible and near-infrared wavelengths of light. Optimized for long-range surveillance, they are designed with industry-leading performance and quality, offering high-quality images with resolutions ranging from HD 2MP (1080p) to UltraHD 8K/33MP.

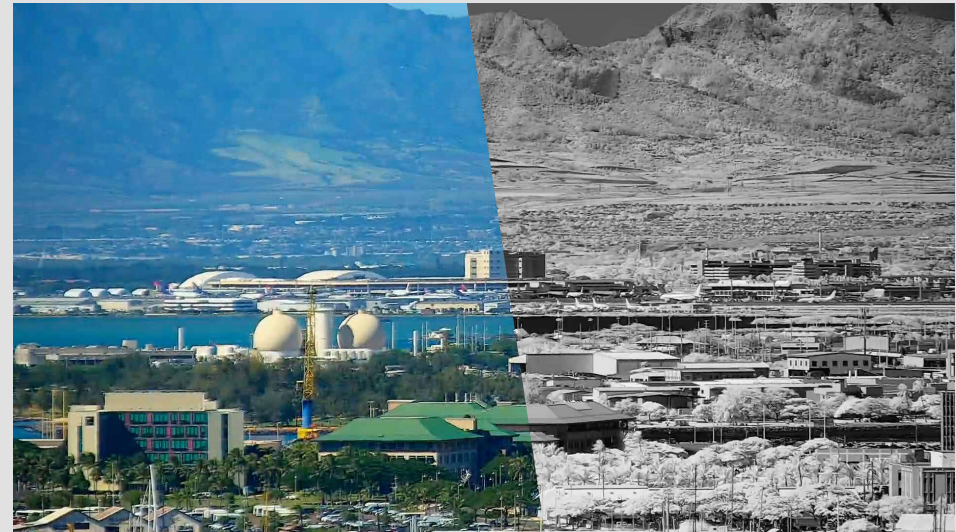
### Image Processing

Infiniti's zoom cameras integrate the latest technology in real-time image processing such as WDR (Wide Dynamic Range), BLC (Backlight Compensation), HLC (Highlight Compensation), EIS (Electronic Image Stabilization), 3D DNR (Digital Noise Reduction), Digital Defog/Haze Reduction, etc. These allow users to achieve the best image quality possible in various applications with minimal operator intervention.

### Video Formats

Network zoom cameras are often preferred for their flexibility and ease of transmission over wired or wireless networks. Infiniti's network zoom cameras feature RTSP video streams for compatibility with most VMS and C2 softwares. Video streams can be accessed anywhere in the world using a variety of devices including mobile phones and tablets. When paired with our Octagon platform, advanced control of zoom cameras, pan/tilts, ZLID™ illuminators, LRFs, and other devices can all be performed over standard IP networks.

Infiniti's latest 8M-61X-OS module also includes a native MIPI interface for direct-to-GPU AI processing. This allows for the streaming of raw, uncompressed video with ultra-low latency, ensuring your algorithms receive the purest data available for maximum accuracy and real-time detection speed.



**Standard Color Visible Image**  
(Optical Fog Filter Disabled)

**NIR Image**  
(Optical Fog Filter Enabled)

### Optical Fog Filter (NIR Only Mode)

While all of our surveillance sensors offer a nighttime NIR + visible mode for optimized sensitivity in low light, the cameras equipped with our NIR bandpass filter (also referred to as a "fog filter") allow users to isolate the NIR (near-infrared) wavelength of light during the day for clearer long-range daytime imaging.

Long-range imaging needs to see through large amounts of atmosphere which often contains particulates like smoke, haze/fog, and other atmospheric distortions. Cutting out the visible wavelength and isolating the NIR can mitigate the effects of smoke, haze and light fog, producing an image with better contrast and less distortion. Our optical fog filter lenses incorporate a motorized filter that is used with the camera's monochrome mode and de-haze image processing to see through smoke, smog and haze.

TECHNOLOGY

# Zoom Lenses, Optical Stabilization & X-Factor

## Continuous Zoom Lenses

Infiniti's precision engineered IR-corrected zoom lenses are built with high quality optical glass and feature integrated rapid auto focus. We offer a wide range of focal lengths with optical zoom factors from 24X up to 95X zoom and a maximum focal length as long as 2050mm. Paired with the surveillance-optimized 1/1.8" sensor, our 2050mm lens has the equivalent field of view of a "full-frame" DSLR camera with a 9600mm lens.

## Optical Stabilization

Due to the very narrow fields of view achieved by our longest-range lenses (less than 1°), it only takes a little bit of vibration to render the image unusable. Some of our camera modules, including our newest 8M-61X-OS, now incorporate optical stabilization, which is incredibly advantageous for long-range imaging.

With a full-zoom FOV of 0.36°x0.2°, just a tiny camera shake of 0.1° on the 8M-61X-OS would shift the image by 50% of the video feed height. Optical stabilization uses floating lens elements and/or sensors that counteract that image shift, allowing for the image to stay on target even when wind or small platform vibrations would otherwise compromise that image quality.

Look for Optical Stabilization as a standard feature on the 8M-61X-OS and 3M-53X-OS, as well as an optional upgrade on the 8M-53X and 4M-53X camera modules.



**20X  
Zoom**



**5X  
Zoom**

## X-Numbers Do Not Necessarily Determine How Far A Camera Can See

When a camera's zoom range is displayed as "10X" or "95X", this is communicating the wide to narrow ratio of a camera's zoom capabilities. These numbers do not tell us how small a field of view the camera will have. In other words, the "X" numbers are not measurements of how "far" it can see and can not be used to calculate this information.

For example, a lens with a zoom range of 5mm to 500mm would be a 100X lens, because it can zoom to 100 times its widest focal point. Yet a lens that measures 500mm to 1000mm would only be a 2X lens, even though it "sees" twice as far as the 5-500mm lens does.

# RATING STANDARDS

## DORI Ratings



The DORI standard (based on the IEC EN62676-4: 2015 International Standard) defines different levels of detail for Detection (25PPM), Observation (62PPM), Recognition (125PPM), and Identification (250PPM). By using these PPM (pixel per meter) values as guidelines, it is possible to select a specific camera sensor/lens combination and know that it will provide the performance needed in each application. Below are examples of each level of DORI detail.

*Note that while Infiniti believes that DORI provides a good general guideline, every application is unique and customers may find more or less detail is necessary for their objectives.*



**Detection**  
25ppm

An operator will be able to determine a human presence, although few details about that human will be visible.



**Observation**  
62ppm

Some characteristic details of the individual, such as distinctive clothing, can start to be seen.



**Recognition**  
125ppm

Verify with a high degree of certainty whether an individual is the same as someone you know. License plates become legible under good conditions.



**Identification**  
250ppm

The ability to positively identify a person beyond reasonable doubt. Provides sufficient image quality to identify an individual or clearly read a license plate.

The examples here simulate the amount of detail if you were to digitally zoom into the image. **Please note that these image simulations assume optimum imaging conditions, however many factors such as atmospheric conditions, heat waves, available light, subject motion or camera shake can degrade image clarity, and most of these issues are amplified at longer distances.**

# Innovative Solutions

## Telescope Optics - 8M-2050TO

The 8M-2050TO is our latest innovation in visible sensor surveillance. Its 8 megapixel sensor and 2050mm telescopic lens provide the highest possible detail on long-range targets. With a Horizontal Field of View (HFOV) of just 0.12°, this module delivers over 1000 pixels per meter (PPM) at 1 km, ensuring maximum detail on targets.

Due to the extremely narrow field of view, we always pair the 8M-2050TO with a secondary visible zoom module. This provides a wider situational awareness, ensuring operators can quickly locate targets and keep an eye on general activity outside the 2050TO's detailed narrow field of view.



### 8M-2050TO





Simulated FOV @ 1km  
 Click image to preview FOV with different distances and objects in our lens calculator.



Pixels Per Meter @ 1km		1025ppm
DORI	D: 25ppm	41,000m Detection
	O: 62ppm	16,532m Observation
	R: 125ppm	8,200m Recognition
	I: 250ppm	4,100m Identification
Output Resolution		8MP/4K @ 30fps (3840x2160)
Image Sensor		8.4 Megapixel 1/1.8" W CMOS
Lens	Focal Length	2050mm
	Zoom	No Optical Zoom, 16X Digital
	Field of View	0.21° Horizontal
	1080p Equivalent†	2X, 0.11° HFOV
	Focus	Manual
Minimum Illumination		Color: 0.03 Lux @ f/1.2; B&W: 0.003 Lux @ f/1.2
Optical Fog Filter (NIR)		Yes
Heatwave Mitigation		No
NDAA Compliant		Yes
Video Network	Video Out	IP
	Compression	H.265/H.264/MJPEG
	Protocol	ONVIF, HTTP, RTSP, RTP, TCP, UDP
Image Stabilization		Electronic Image Stabilization (EIS)
Image Enhancements		AWB, BLC, WDR, DNR
Edge Storage		Supports MicroSD Card up to 256GB
Dimensions & Weight		767mm x 348mm x 319mm, ~25kg**

Brochure specifications subject to change. \*Lens measurements, angle of view and PPM/DORI numbers are accurate to ±10% due to back focus distances, sensor sizes, lens manufacturing, etc.  
 †Zoom ratio and FOV if zoomed into a 1080p crop of the video output.  
 \*\*These dimensions and weight include an enclosure.

# Specifications

		8M-61X-OS	8M-95X	8M-53X (-OS)	4M-53X (-OS)
Simulated FOV @ 1km <i>Click image to preview FOV with different distances and objects in our lens calculator.</i>					
<b>Pixels Per Meter @ 1km</b>		<b>612ppm</b>	<b>508ppm</b>	<b>400ppm</b>	<b>274ppm</b>
DORI	D: 25ppm	24,500m Detection	20,300m Detection	16,000m Detection	10,944m Detection
	O: 62ppm	9,879m Observation	8,815m Observation	6,452m Observation	4,413m Observation
	R: 125ppm	4,900m Recognition	4,060m Recognition	3,200m Recognition	2,189m Recognition
	I: 250ppm	2,450m Identification	2,030m Identification	1,600m Identification	1,094m Identification
Output Resolution		8MP/4K @ 30fps (3840x2160)	8MP/4K @ 30fps (3840x2160)	8MP/4K @ 30fps (3840x2160)	4MP @ 30fps (2688x1520)
Image Sensor		8.4 Megapixel 1/1.8" W CMOS	8.4 Megapixel 1/1.8" W CMOS	8.4 Megapixel 1/1.8" W CMOS	4.1 Megapixel 1/1.7" W CMOS
Lens	Focal Length	20-1225mm	10.6-1015mm	15-800mm	15-800mm
	Zoom	61X Optical Zoom × 16X Digital	95X Optical Zoom × 16X Digital	53X Optical Zoom × 16X Digital	53X Optical Zoom × 16X Digital
	Field of View	21.7°-0.36° Horizontal	42.0°-0.43° Horizontal	28.7°-0.55° Horizontal	29.4°-0.56° Horizontal
	1080p Equivalent†	122X, 0.18° HFOV	190X, 0.22° HFOV	106X, 0.28° HFOV	74X, 0.4° HOV
	Focus	Auto / Manual	Auto / Manual	Auto / Manual	Auto / Manual
Minimum Illumination		Color: 0.1 Lux @ f/2.1; B&W: 0.01 Lux @ f/2.1	Color: 0.1 Lux @ f/2.1; B&W: 0.01 Lux @ f/2.1	Color: 0.1 Lux @ f/1.5; B&W: 0.01 Lux @ f/1.5	Color: 0.05 Lux @ f/2.8; B&W: 0.005 Lux @ f/2.8
Optical Fog Filter (NIR)		Yes	Yes	Yes	Yes
Heatwave Mitigation		Yes	Yes	Yes	Yes
NDAA Compliant		Yes	No	Yes	No
Video Network	Video Out	IP, MIPI	IP, LVDS/SDI optional (2MP only)	IP, LVDS/SDI optional (2MP only)	IP, LVDS/SDI optional (2MP only)
	Compression	H.265/H.264/MJPEG			
	Protocol	ONVIF, HTTP, RTSP, RTP, TCP, UDP			
Image Stabilization		Optical Stabilization & EIS	Electronic Image Stabilization (EIS)	Electronic Image Stabilization (EIS), Optional Optical Stabilization	
Image Enhancements		Auto White Balance, 100dB WDR, 2D/3D DNR, BLC, HLC, Digital Defog			
Edge Storage		Supports MicroSD Card up to 256GB			
Dimensions & Weight		405mm × 126mm × 126mm, ~5kg	384mm × 144mm × 150mm, 5.6kg	320mm × 110mm × 110mm, 3.1kg	320mm × 110mm × 110mm, 3.1kg




\*Lens measurements, angle of view and PPM/DORI numbers are accurate to ±10% due to back focus distances, sensor sizes, lens manufacturing, etc. †Zoom ratio and FOV if zoomed into a 1080p crop of the video output.

# Specifications

		3M-53X-OS	8M-49X	8M-36X	3M-49X
Simulated FOV @ 1km <i>Click image to preview FOV with different distances and objects in our lens calculator.</i>					
<b>Pixels Per Meter @ 1km</b>		<b>228ppm</b>	<b>136ppm</b>	<b>109ppm</b>	<b>78ppm</b>
DORI	D: 25ppm	9,128m Detection	5,440m Detection	4,360m Detection	3,103m Detection
	O: 62ppm	3,680m Observation	2,194m Observation	1,758m Observation	1,251m Observation
	R: 125ppm	1,826m Recognition	1,088m Recognition	872m Recognition	621m Recognition
	I: 250ppm	913m Identification	544m Identification	436m Identification	310m Identification
Output Resolution		3MP @ 55fps (2048x1536)	8MP/4K @ 30fps (3840x2160)	8MP/4K @ 30fps (3840x2160)	3MP @ 55fps (2048x1536)
Image Sensor		3.2 Megapixel 1/1.8" CMOS w/GS <sup>++</sup>	8.4 Megapixel 1/1.8" W CMOS	8.4 Megapixel 1/1.8" W CMOS	3.2 Megapixel 1/1.8" CMOS w/GS <sup>++</sup>
Lens	Focal Length	15-800mm	5.6-272mm	6-218mm	5.6-272mm
	Zoom	53X Optical Zoom × 16X Digital	49X Optical Zoom × 16X Digital	36X Optical Zoom × 16X Digital	49X Optical Zoom × 16X Digital
	Field of View	26.9°-0.51° Horizontal	75°-1.62° Horizontal	65.2°-2.02° Horizontal	71.4°-1.51° Horizontal
	1080p Equivalent <sup>†</sup>	56X, 0.48° HFOV	98X, 0.81° HFOV	72X, 1.01° HFOV	52X, 1.42° HFOV
	Focus	Auto / Manual	Auto / Manual	Auto/Manual	Auto/Manual
Minimum Illumination		Color: 0.05 Lux @ f/2.8; B&W: 0.005 Lux @ f/2.8	Color: 0.05 Lux @ f/1.4; B&W: 0.005 Lux @ f/1.4	Color: 0.1 Lux @ f/1.5; B&W: 0.01 Lux @ f/1.5	Color: 0.005 Lux @ f/1.4; B&W: 0.001 Lux @ f/1.4
Optical Fog Filter (NIR)		Yes	Yes	Yes	Yes
Heatwave Mitigation		Yes	No	No	No
NDAA Compliant		No	Yes	Yes	No
Video Network	Video Out	IP, LVDS/SDI optional (2MP only)	IP	IP	IP
	Compression	H.265/H.264/MJPEG			
	Protocol	ONVIF, HTTP, RTSP, RTP, TCP, UDP			
Image Stabilization		Optical Stabilization & EIS	Electronic Image Stabilization (EIS)		
Image Enhancements		Auto White Balance, WDR, 2D/3D DNR, BLC, HLC, Digital Defog			Auto White Balance, 100dB WDR, 2D/3D DNR, BLC, HLC, Digital Defog
Edge Storage		Supports MicroSD Card up to 256GB			
Dimensions & Weight		320mm × 110mm × 110mm, 3.3kg	176mm × 73mm × 78mm, 900g	139mm × 66mm × 76mm, 410g	176mm × 73mm × 78mm, 900g

Brochure specifications subject to change. \*Lens measurements, angle of view and PPM/DORI numbers are accurate to ±10% due to back focus distances, sensor sizes, lens manufacturing, etc. †Zoom ratio and FOV if zoomed into a 1080p crop of the video output. ††Global shutter.

# Specifications

		4M-36X	4M-30X	8M-20X	4M-24X
Simulated FOV @ 1km <i>Click image to preview FOV with different distances and objects in our lens calculator.</i>					
<b>Pixels Per Meter @ 1km</b>		<b>75ppm</b>	<b>72ppm</b>	<b>66ppm</b>	<b>60ppm</b>
DORI	D: 25ppm	2,982m Detection	2,873m Detection	2,640m Detection	2,394m Detection
	O: 62ppm	1,202m Observation	1,158m Observation	1,065m Observation	965m Observation
	R: 125ppm	596m Recognition	575m Recognition	528m Recognition	479m Recognition
	I: 250ppm	298m Identification	287m Identification	264m Identification	239m Identification
Output Resolution		4MP @ 60fps (2688x1520)	4MP @ 30fps (2688x1520)	8MP/4K @ 30fps (3840x2160)	4MP @ 30fps (2688x1520)
Image Sensor		4.5 Megapixel 1/1.7" W CMOS	4.1 Megapixel 1/2.9" CMOS	8.4 Megapixel 1/1.8" W CMOS	4.1 Megapixel 1/2.9" CMOS
Lens	Focal Length	6-218mm	4.7-141mm	6.6-132mm	5-120mm
	Zoom	36X Optical Zoom × 16X Digital	30X Optical Zoom × 16X Digital	20X Optical Zoom × 16X Digital	24X Optical Zoom × 16X Digital
	Field of View	66.4°-2.07° Horizontal	67.9°-2.14° Horizontal	62.5°-3.3° Horizontal	56.6°-2.57° Horizontal
	1080p Equivalent†	50X, 1.48° HFOV	42X, 1.53° HFOV	40X, 1.65° HFOV	33X, 1.84° HFOV
	Focus	Auto/Manual	Auto/Manual	Auto/Manual/Semi-Auto	Auto/Manual
Minimum Illumination		Color: 0.005 Lux @ f/1.5; B&W: 0.0005 Lux @ f/1.5	Color: 0.005 Lux @ f/1.5; B&W: 0.0005 Lux @ f/1.5	Color: 0.01 Lux @ f/1.5; B&W: 0.001 Lux @ f/1.5	Color: 0.005 Lux @ f/1.5; B&W: 0.0005 Lux @ f/1.5
Optical Fog Filter (NIR)		Yes	No	No	No
Heatwave Mitigation		No	No	Optional	No
NDAA Compliant		Yes	Yes	Yes	Yes
Video Network	Video Out	IP	IP, LVDS/SDI optional (2MP only)	IP	IP, LVDS/SDI optional (2MP only)
	Compression	H.265/H.264/MJPEG			
	Protocol	ONVIF, HTTP, RTSP, RTP, TCP, UDP			
Image Stabilization		Electronic Image Stabilization (EIS)			
Image Enhancements		Auto White Balance, WDR, 2D/3D DNR, BLC, HLC, Digital Defog			
Edge Storage		Supports MicroSD Card up to 256GB			
Dimensions & Weight		139mm × 66mm × 68mm, 410g	97mm × 52mm × 59mm, 285g	64mm × 42mm × 51mm, 148g	97mm × 52mm × 59mm, 285g

Brochure specifications subject to change. †Lens measurements, angle of view and PPM/DORI numbers are accurate to ±10% due to back focus distances, sensor sizes, lens manufacturing, etc. †Zoom ratio and FOV if zoomed into a 1080p crop of the video output.

# Specifications



		30X	8M-8X
Simulated FOV @ 1km <i>Click image to preview FOV with different distances and objects in our lens calculator.</i>			
<b>Pixels Per Meter @ 1km</b>		<b>50ppm</b>	<b>27.5ppm</b>
DORI	D: 25ppm	1,982m Detection	1,101m Detection
	O: 62ppm	799m Observation	444m Observation
	R: 125ppm	396m Recognition	220m Recognition
	I: 250ppm	198m Identification	110m Identification
Output Resolution		2MP/1080p @ 60fps (1920x1080)	8MP/4K @ 30fps (3840x2160)
Image Sensor		2.4 Megapixel 1/2.8" CMOS	8.4 Megapixel 1/2.8" CMOS
Lens	Focal Length	4.8-144mm	5-40mm
	Zoom	30X Optical Zoom × 16X Digital	8X Optical Zoom × 16X Digital
	Field of View	60.3°-2.22° Horizontal	58.3°-8.0° Horizontal
	1080p Equivalent†	30X, 2.22° HFOV	16X, 4.0° HFOV
	Focus	Auto/Manual	Auto/Manual/Semi-Auto
Minimum Illumination		Color: 0.005 Lux @ f/1.5; B&W: 0.0005 Lux @ f/1.5	Color: 0.01 Lux @ f/1.5; B&W: 0.001 Lux @ f/1.5
Optical Fog Filter (NIR)		No	No
Heatwave Mitigation		No	No
NDAA Compliant		Yes	Yes
Video Network	Video Out	IP, LVDS/SDI optional	IP
	Compression	H.265/H.264/MJPEG	
	Protocol	ONVIF, HTTP, RTSP, RTP, TCP, UDP	
Image Stabilization		Electronic Image Stabilization (EIS)	None
Image Enhancements		Auto White Balance, WDR, 2D/3D DNR, BLC, HLC, Digital Defog	
Edge Storage		Supports MicroSD Card up to 256GB	
Dimensions & Weight		97mm × 52mm × 59mm, 285g	65mm × 42mm × 51mm, 146g

Brochure specifications subject to change. †Lens measurements, angle of view and PPM/DORI numbers are accurate to ±10% due to back focus distances, sensor sizes, lens manufacturing, etc. †Zoom ratio and FOV if zoomed into a 1080p crop of the video output.

## Lens FOV Previews

Designed to take the guesswork out of system integration, this calculator allows you to define target size and distances to visualize Field of View (FOV) and pixel density. The tool also provides a simulated detail preview, allowing end customers to get a rough idea of potential detail levels for a chosen camera before the costly process of purchase and installation.

Try out our Lens FOV Preview tool:



## Visible/NIR Module Options

Our full selection of Visible/Near Infrared camera module options.

**Pro Tip:** On desktop computers you can hold down the shift key while scrolling your mouse wheel to scroll sideways to see more options.

<b>20mm-1225</b> 61X 8MP	<b>10.6mm-1015</b> 95X 8MP	<b>15mm-800</b> 53X 8MP	<b>15mm-800</b> 53X 4MP	<b>15mm-800</b> 53X 3MP	<b>5.6mm-272</b> 49X 8MP	<b>6mm-218</b> 36X 8MP	<b>5.6mm-272</b> 49X 3MP
-----------------------------	-------------------------------	----------------------------	----------------------------	----------------------------	-----------------------------	---------------------------	-----------------------------

Subject Size: Human (0.5m × 1.8m) | Subject Distance: 1000m (0.6 miles, 3,281 ft)

**8M-61X-OS** | 1000m (0.6 miles, 3,281 feet) | **612.5 ppm**

1/1.8" Wide 3840x2160 (4K, 2160p, 8MP) w/1225mm | 600ppm Example

Field Of View: 0.36° HFOV, 0.2° VFOV, 6.3m HFOV, 3.5m VFOV | Pixels On Target: 306 HPoT, 1102 VPoT, 33712 Total | DORI: D: 24500 m, O: 9879 m, R: 4900 m, I: 2450 m

# TECHNOLOGY

# Spotter Cameras

## Maintain Situational Awareness with Wide Angle Spotter Cameras

Effective long-range surveillance means that your angle of view will be very small (see example below) which can make it difficult to get a sense of where you're looking or know what's happening outside of that area.

By integrating a second sensor with a wide angle lens, operators can maintain a wide situational awareness without having to temporarily sacrifice their detailed surveillance of targets at extreme long ranges.



### 12M-3X

### 33M-24

Simulated FOV @ 1km  
 Click image to preview FOV with different distances and objects in our lens calculator.



Pixels Per Meter @ 1km		9.4ppm	5.1ppm
DORI	D: 25ppm	390m Detection	205m Detection
	O: 62ppm	157m Observation	83m Observation
	R: 125ppm	78m Recognition	41m Recognition
	I: 250ppm	39m Identification	20m Identification
Output Resolution		12MP/4K @ 20fps (4000x3000)	8K @ 15fps (7680x4320)
Image Sensor		12.9 Megapixel 1/2.3" CMOS	33 Megapixel 24x36mm CMOS
Lens	Focal Length	3.9-14.5mm	24mm (other options available)
	Zoom	3.5X Optical Zoom x 16X Digital	32X Digital Zoom
	Field of View	74.6°-24.0° Horizontal	62.1° Horizontal
	1080p Equivalent†	7X, 11.5° HFOV	4X, 15.6° HFOV
	Focus	Auto/Manual/Semi-Auto	Auto/Manual
Minimum Illumination		Color: 0.5 Lux @ f/2.4; No dedicated B&W low-light mode	Color: 0.015 Lux @ f/1.4; B&W: 0.0015 Lux @ f/1.4
Optical Fog Filter (NIR)		No	No
Heatwave Mitigation		No	No
NDAA Compliant		Yes	Yes
Video Network	Video Out	IP	IP
	Compression	H.265/H.264/MJPEG	
	Protocol	ONVIF, HTTP, RTSP, RTP, TCP, UDP	
Image Stabilization		Electronic Image Stabilization (EIS)	None
Image Enhancements		Auto White Balance, WDR, 2D/3D DNR, BLC, HLC, Digital Defog	Auto White Balance, DWDR, BLC
Edge Storage		Supports MicroSD Card up to 256GB	
Dimensions & Weight		56mm x 30mm x 40mm, 55g	120mm x 119mm x 262mm, 2.75kg

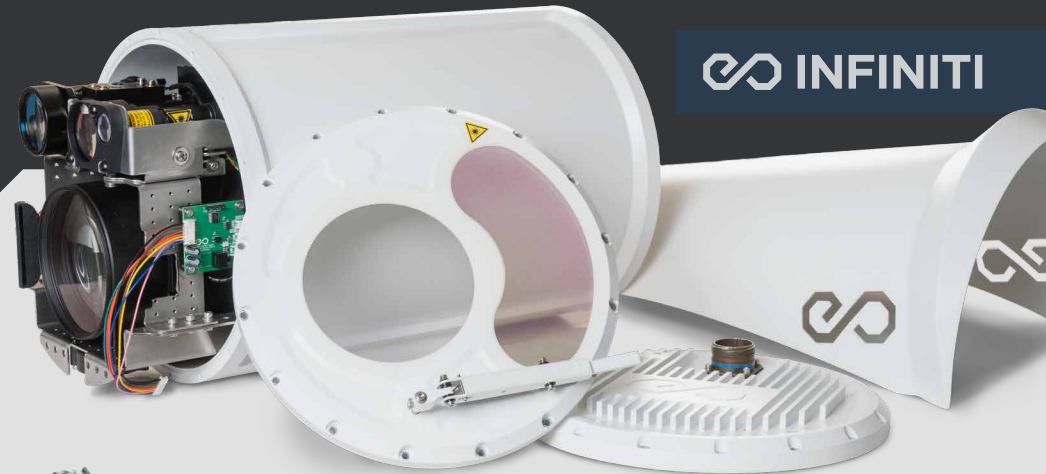
Brochure specifications subject to change. \*Lens measurements, angle of view and PPM/DORI numbers are accurate to ±10% due to back focus distances, sensor sizes, lens manufacturing, etc. †Zoom ratio and FOV if zoomed into a 1080p crop of the video output.

# CUSTOMIZATION Enclosures/Systems

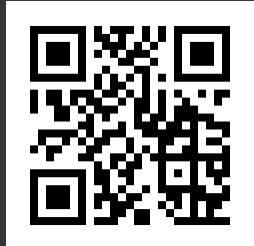


## OEM Modules, Enclosures or PTZ Systems

The lens and sensor options in this brochure are available as open frame OEM modules or integrated into IP66 weatherproof enclosures. They can also be part of a complete EO/IR PTZ system with optional thermal imaging and/or ZLID™ infrared illumination for high-detail night vision and more.



To see our many camera system options, visit our main website at [infinitioptics.com](http://infinitioptics.com)





# CUSTOM LONG-RANGE CAMERA SYSTEMS

ZLID • VISIBLE • IR • THERMAL • SWIR • GYRO



Contact us today:

[WWW.INFINITIOPTICS.COM](http://WWW.INFINITIOPTICS.COM)

1-866-969-6463

[INFO@INFINITIOPTICS.COM](mailto:INFO@INFINITIOPTICS.COM)